

Quick Start Guide

For more information about how to use the phone, please go to www.alcatelontouch.com to download complete user manual.



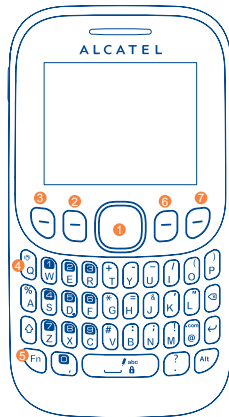
This product meets applicable national SAR limits of 2.0 W/kg. The specific maximum SAR values can be found on page 25 of this user guide.

When carrying the product or using it while worn on your body, either use an approved accessory such as a holster or otherwise maintain a distance of 10 mm from the body to ensure compliance with RF exposure requirements.

PROTECT YOUR HEARING To prevent possible hearing damage, do not listen at high volume levels for long periods.

ALCATELontouch.

Your mobile.....



- Navigation key: Menu/Confirm an option
Left softkey
Pick up/Send call
Call log (idle screen)
Vibration alert (press and hold)
Fn key
Right softkey
Switch on/ Switch off End call

1.1 Keys

- Navigation key: Confirm an option (press the middle of the key)
Pick up: Send a call
In idle screen: Access call log (Redial) (press)
Switch on/Switch off the telephone (press and hold)
End call: Return to idle screen
Left softkey
Right softkey
Access your voicemail (press and hold)
In idle screen: Press and hold: Lock the keypad
In edit mode: Press: input space
Press and hold: switch language

Fn

- In idle screen: Press to access shortcuts
Fn + B: Access to Bluetooth
Fn + P: Access to Profiles
Fn + S: Access to Settings
In edit mode: Press once: Input a top-half character
Press twice: Lock the keyboard in top-half key input mode, then press again to unlock top-half character input mode
Delete one by one (press)
Delete one by one quickly (press and hold)
Move cursor to the next line
In edit screen: Press: Switch the uppercase and lowercase

1.2 Status bar icons (1)

- Battery charge level.
Vibrate alert: your phone vibrates, but does not ring or beep with the exception of the alarm.
Bluetooth status (Activated).
Bluetooth status (Connected to an audio device).
Keypad locked.
Headset connected.
Call forwarding activated: your calls are forwarded.
Alarm or appointments programmed.
Level of network reception.
Voicemail message arrived.
Missed calls.
Stopwatch is active.
Radio is on.
Roaming.
SD card scanning completed.
SIM card missing.
GPRS connection status (Activated).

GPRS connecting.

- Music activated.
MMS receipt in progress.
Sending a MMS.
Silence mode: your phone does not ring, beep or vibrate with the exception of the alarm.
SMS unread.
MMS unread.
(Flickering) Message list is full: your phone cannot accept any new messages. You must access the message list and delete at least one message on your SIM card.
Flight mode.

1.3 Home screen

- 1.3.1 Widget bar
Widgets are convenient shortcuts for quick access from the Home screen. You can customize widget bar by "Settings\Phone settings\Widget bar".
1.3.2 Change wallpaper
You can select a folder to choose one image as favourite wallpaper by selecting "Options\Set as\Wallpaper".

2 Getting started.....

2.1 Set-up



Removing or installing the back cover
Removing and inserting the SIM card
You must insert your SIM card to make phone calls. Please power off your phone and remove battery before inserting or removing the SIM card.



Place the SIM card with the chip facing downwards and slide it into its housing. Make sure that it is correctly inserted. To remove the card, press and slide it out.



Removing and installing the battery
Insert and click the battery into place, then close the telephone cover. Unclip the cover, then remove the battery.

Charging the battery



Connect the battery charger to your phone and mains socket respectively.

To reduce power consumption and energy waste, when battery is fully charged, disconnect your charger from the plug; switch off Bluetooth or background-running applications when not in use; reduce the backlight time, etc.

2.2 Power on your phone

Hold down the key until the telephone powers on.

2.3 Power off your phone

Hold down the key from the Home screen.

3 Calls.....

3.1 Making a call

Dial the desired number then press the key to place the call. If you make a mistake, you can delete the incorrect digits by pressing the key.

To hang up the call, press the key.

Making an emergency call

If your phone is covered by the network, dial emergency number and press the key to make an emergency call. This works even without a SIM card and without typing the PIN code or unlocking the keypad.

3.2 Calling your voicemail (1)

To access your voicemail, hold down the key.

3.3 Receiving a call

When you receive an incoming call, press the key to talk and then hang up using the key.

3.4 Available functions during the call

During a call, you can use your contacts, short messages, etc. without losing your correspondent.

4 Menu arrange.....

It is designed to vary according to your preference.

Change the order

Access the main menu, focus on the main menu item you want to move, select "Options>Select to move", and tick "y" will be shown on the item you selected, then release it to your favourite destination.

Show/Hide

Access the main menu, select "Options>Add and remove menu", and select the left check box of the selected menu once to show/hide, and then select "Done" to save the operation.

5 Messages.....

5.1 Access

You may access this menu using the following options:

- Access from the main menu by selecting "Messages".
Select from widget bar, and then enter the sub-menu you require.

5.2 Write message

You can select "Messages\Write new SMS/MMS" from the main menu or access from widget to write text/multimedia message. One or more recipients can be added from contact list and you can remove a recipient by pressing Delete key. Press "Contacts" through key to multi-select recipients from Contacts.

An SMS will be converted to MMS automatically when images, videos are inserted.

An SMS message of more than a certain number of characters (the number of characters depends on your language) will be charged as several SMS. An MMS message containing photos and/or sounds may also be billed as more than one message. Specific letters (accent) will increase the size of the SMS, this may cause multiple SMS to be sent to your recipient.

6 Contacts.....

6.1 Consulting your contacts

You can access to this function by selecting "Contacts" from the main menu.

6.2 Adding a contact

You can add a new contact to phone or SIM card by selecting "Add contact".

7 Call log.....

7.1 Access

You can access the function using the following options:

- Select from main menu
Press key from Home screen
Select from widget bar, and then enter the sub-menu you require.

7.2 Available options

When you press "Options", you can have access to View, Send message, Save to Contacts, Edit before call, Add to Blacklist, Add to Whitelist, Delete etc.

8 Music.....

You can access this feature from the main menu by selecting "Music". You will have full flexibility of managing music both on your mobile and SD card.

9 Images.....

A library links to the images (stored in "My images") in phone or SD card, set as Wallpaper, Power on/off display, and Incoming call image, or sent by MMS, Bluetooth.

10 Videos.....

Contains all video clips (stored in "My videos") in phone or SD card and enables you to play, send, set as power on/off display, delete, rename, etc.

11 FM radio.....

Your phone is equipped with a radio with RDS functionality. You can use the application as a traditional radio with saved channels or with parallel visual information related to the radio program on the display, if you tune to stations that offer Visual Radio service. You can listen to it while running other applications.

To access volume interface, please press and hold the key. Then you can adjust the volume by pressing the key.

12 WAP.....

Access Wap options: Homepage, Bookmarks, Go to URL, Last wap address, Recent pages, Offline pages, Service inbox, Settings.

13 Apps (3).....

Apps store is an online software store, where you can download and install applications and games to your phone.

14 Stopwatch.....

The stopwatch is a simple application for measuring time with the possibility to register several results and suspend/resume measurement.

15 Camera.....

Your mobile phone is fitted with a camera for taking photos and shooting videos that you can use in different ways:

- store them as your creations in SD card or phone.
send them in a multimedia message (MMS) to a mobile phone.
send them directly by MMS, Bluetooth.
customise your Home screen.
select them as incoming call image to a contact in your Contacts.

16 Profiles.....

With this menu, you may personalise ringtones for different events and environments.

18 Bluetooth.....

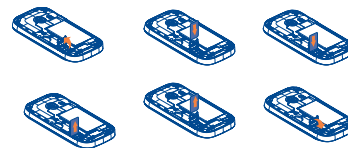
Access this feature by pressing "Menu" through Left softkey from the Home screen to enter the main menu, then selecting "Bluetooth".

(1) The icons and illustrations in this guide are provided for informational purposes only.

17 My files.....

You will have an access to all audio and visual files stored in phone or SD card in My files.

Inserting and removing the memory card:



To release the MicroSD card holder, slide it in the direction of the arrow and lift it. Then insert the MicroSD card with the golden contact downward. Finally, turn down the MicroSD holder and slide it in the opposite direction to lock it.

Do not support hot plugging for MicroSD card.

19 Calendar.....

Once you enter this menu from main menu, there is a monthly-view calendar for you to keep track of important meetings, appointments, etc. Days with events entered will be marked in color.

20 Calculator.....

Access this feature by selecting "Calculator" from the main menu. Enter a number, select the type of operation to be performed using the navigation keys, and enter the second number, then select "=" to display the result.

21 Recorder.....

Accessing "Recorder" from the main menu allows you to make voice or sound recordings.

22 Alarm.....

Your mobile phone has a built-in alarm clock with a snooze feature.

23 Voice alarm.....

With this menu, you may create the voice file and set it as the alarm.

24 World clock.....

The World clock shows current local time and the time zone in different cities.

25 Settings.....

From the main menu, select the menu icon and select the function of your choice in order to customise your telephone: Phone settings, Call settings, Security, Network, Connectivity, Restore default.

26 Fake call.....

This program enables you to call yourself by simulating a caller number/name, ringtone at a scheduled time. It helps you to politely escape from social situations at any time you wish. This call can be rejected by key. Activate a fake call by "Fake call model Enable".

27 Call filter.....

Enable blacklist, all callers in the list will be automatically blocked. Enable whitelist, only callers in the list can be connected.

